



TO LET

Unit 7
1,640 sq.ft
(152.35 sq.m)

Ground Floor 977 sq.ft (90.76 sq.m)	Basement 663 sq.ft (61.59 sq.m)
---	---------------------------------------

M NORTHFIELD SHOPPING CENTRE

Bristol Road South
Birmingham
B31 2JU

Occupiers Include



Iceland
Superdrug[☆]



COMING SOON

SHEET ANCHOR EVOLVE

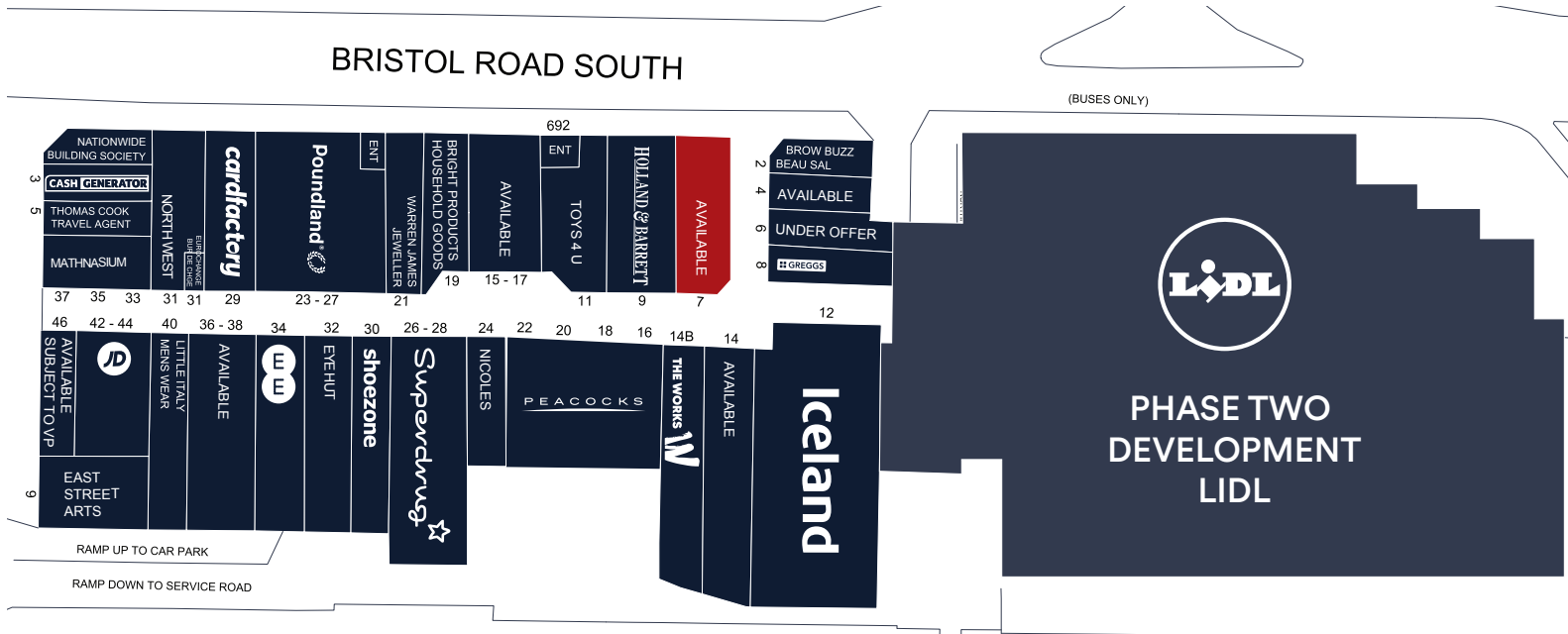
part of M^{Core}



Sam Cohen
07787 392 840
020 7228 6508
scohen@saevolve.com



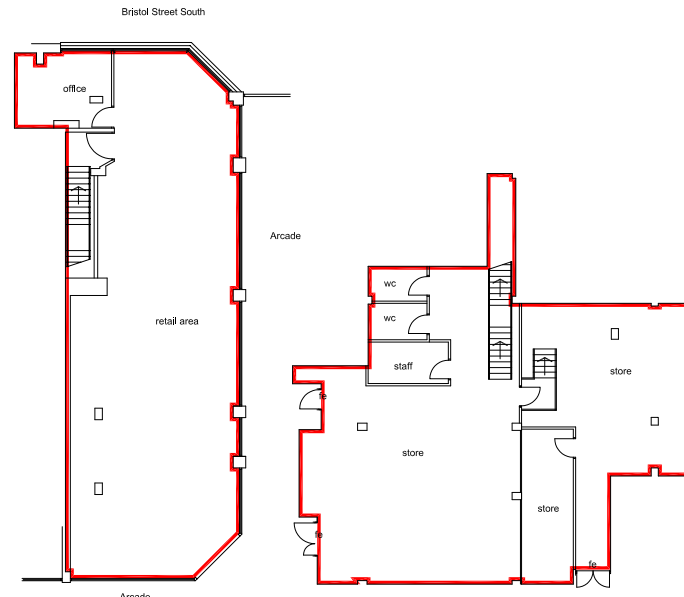
Rakesh Joshi
07741 385 322
01384 400123
RJoshi@lcpproperties.co.uk



Viewing
Strictly via prior appointment
with the appointed agent:

Creative Retail

Scott Robertson
07831 856 733
0121 400 0407
scott@creative-retail.co.uk



Ground Floor Plan 1.125 Basement Plan 1.125

MISREPRESENTATION ACT, 1967 London & Cambridge Properties Limited (Company Number 02895002) the registered office of which is at LCP House, Pennant Estate, Kingswinford, West Midlands DY19 7NA its subsidiaries (as defined in section 1166 of the Companies Act 2006) associated companies and employees ("we") give notice that: Whilst these particulars are believed to be correct no guarantee or warranty is given, or implied therein, nor do they form any part of a contract. (We do our best to ensure all information in this brochure is accurate. If you find any inaccurate information, please let us know and where appropriate, we will correct it.) We make no representation that information is accurate and up to date or complete. We accept no liability for any loss or damage caused by inaccurate information. This brochure gives a large amount of statistical information and there will inevitably be errors in it. Intending purchasers or tenants should not rely on the particulars in this brochure as statements or representations of fact but should satisfy themselves by inspection or otherwise as to the correctness of each of them. We provide this brochure free of charge and on the basis of no liability for the information given. In no event shall we be liable to you for any direct or indirect or consequential loss, loss of profit, revenue or goodwill arising from your use of the information contained herein. All terms implied by law are excluded to the fullest extent permitted by law. No person in our employment has any authority to make or give any representation or warranty whatsoever in relation to the property. SUBJECT TO CONTRACT. We recommend that legal advice is taken on all documentation before entering into a contract. You should be aware that the Code of Practice on Commercial Leases in England and Wales strongly recommends you seek professional advice from a qualified surveyor, solicitor or licensed conveyancer before agreeing or signing a business tenancy agreement. The Code is available through professional institutions and trade associations or through the website: <https://www.lcp.co.uk/uploads/professional-standards/sector-standards/real-estate/code-for-leasing-business-premises-1st-edition/>. LCP's privacy notices that apply to its use of your personal information are at www.lcpgroup.co.uk/policies. The privacy notice that applies to you will depend on the nature of your relationship with LCP, and in some cases more than one may apply to you. LCP's privacy policy giving a high-level overview of how LCP approaches data protection and your personal information can be found at www.lcpproperties.co.uk/uploads/files/LCP-Privacy-Web-and-Data-Policy-May-2018.pdf.