

SUBJECT TO A FULL REFURBISHMENT

SUBJECT TO VACANT POSSESSION



TO LET Warehouse/Industrial Unit
53,950 sq.ft (5,012 sq.m)

Unit 9, Progress Way, Binley Industrial Estate, Coventry, CV3 2NT

- Self-contained fully fenced facility
- High bay distribution facility
- Ground and first floor offices
- Ample loading and parking
- Good road network connections

LCP
part of MCore

01384 400123

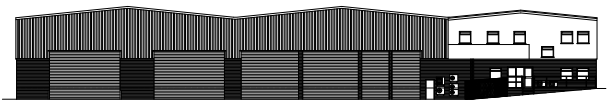


searchlcp.co.uk

Unit 9, Progress Way, Binley Industrial Estate, Coventry, CV3 2NT



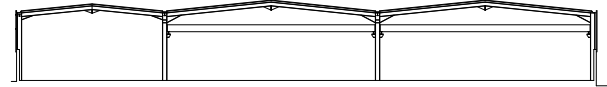
Elevations and Floor Plan



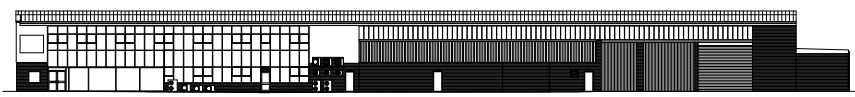
Side Elevation



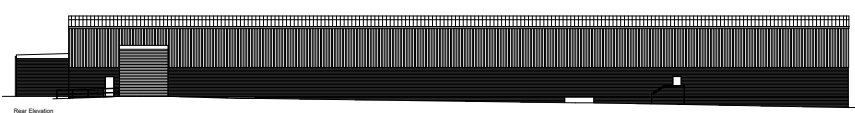
Side Elevation



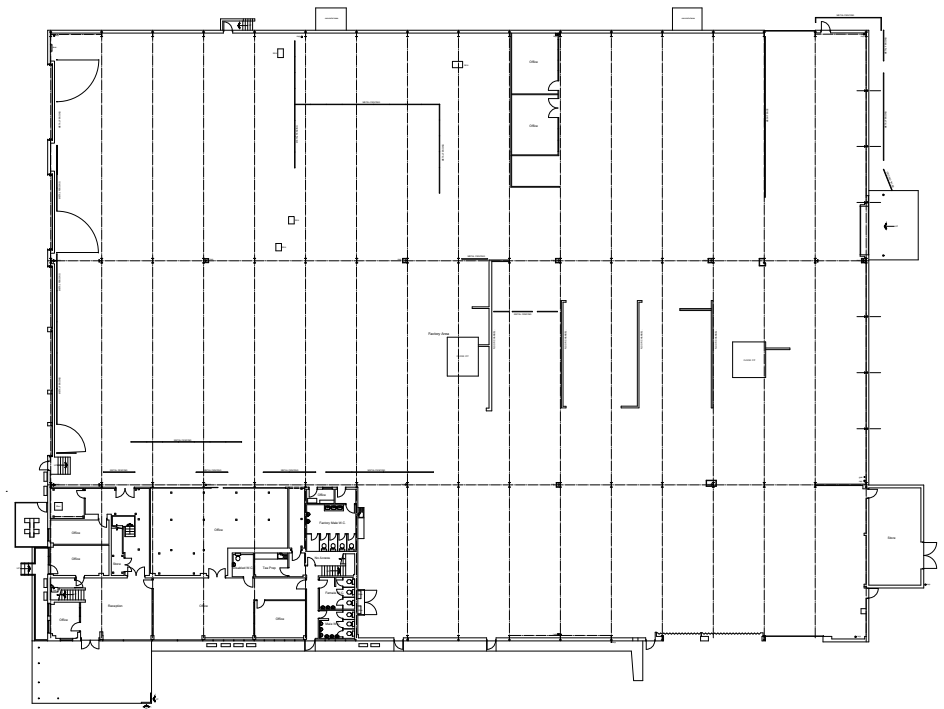
Typical Section



Front Elevation



Rear Elevation



Unit 9, Progress Way, Binley Industrial Estate, Coventry, CV3 2NT

Areas (Approx. Gross Internal)

GF Warehouse	47,558 sq.ft	(4,418 sq.m)
GF Office & Ancillary Areas	4,078 sq.ft	(378 sq.m)
First Floor	2,314 sq.ft	(215 sq.m)
TOTAL	53,950 sq.ft	(5,012 sq.m)

Description

- 6 dock level doors ranging from W2.9m-7.5m by H3.8m
- 8 level doors ranging from W3.65m-5.64m by H4.98m
- 6m eaves to the base of the haunches and 7.5m to the apex on all 3 bays
- LED lighting throughout
- Ample car parking and yard space

Office

- Main reception with male and female toilets
- Ground and First floor offices
- Kitchen/tea prep area

Rent

POA

Energy Performance

Further information available upon request.

Planning

The property is considered suitable for B1 (Light Industrial), B2 (General Industrial) or B8 (Warehousing) use.

All interested parties are to make their own specific enquiries directly with the Local Planning Authority as to their intended use.

Location - CV3 2NT

Binley Industrial Estate is situated three miles east of Coventry city centre.

Access to Rugby can be gained by taking the A428 westwards. The nearby A46 connects to J2 of the M6/M69 intersection to the north, as well as Coventry Airport and the M40 motorway to the south.

The site benefits from excellent transport links and a number of local amenities, making it a convenient and attractive location for businesses and employees alike.



Distance from Local Areas (Approx.)

Rugby	8.7 Miles
Nuneaton	11.9 Miles
Leicester	23.6 Miles
Birmingham	26.8 Miles
Northampton	36.8 Miles



Viewing

Strictly via prior appointment with the appointed agents



Mark Booth

07497 150 632

mark.booth@bromwichhardy.com



James Clements

07436 165 015

j.clements@box4realstate.co.uk



David Charlton

07471 215 144

DCharlton@lcpproperties.co.uk

MISREPRESENTATION ACT, 1967 London & Cambridge Properties Limited (Company Number 02895002) the registered office of which is at LCP House, Pensnett Estate, Kingswinford, West Midlands DY6 7NA its subsidiaries (as defined in section 1156 of the Companies Act 2006) associated companies and employees ("we") give notice that: Whilst these particulars are believed to be correct no guarantee or warranty is given, or implied therein, nor do they form any part of a contract. [We do our best to ensure all information in this brochure is accurate. If you find any inaccurate information, please let us know and where appropriate, we will correct it.] We make no representation that information is accurate and up to date or complete. We accept no liability for any loss or damage caused by inaccurate information. [This brochure gives a large amount of (statistical) information and there will inevitably be errors in it]. Intending purchasers or tenants should not rely on the particulars in this brochure as statements or representations of fact but should satisfy themselves by inspection or otherwise as to the correctness of each of them. We provide this brochure free of charge and on the basis of no liability for the information given. In no event shall we be liable to you for any direct or indirect or consequential loss, loss of profit, revenue or goodwill arising from your use of the information contained herein. All terms implied by law are excluded to the fullest extent permitted by law. No person in our employment has any authority to make or give any representation or warranty whatsoever in relation to the property. SUBJECT TO CONTRACT. We recommend that legal advice is taken on all documentation before entering into a contract. You should be aware that the Code of Practice on Commercial Leases in England and Wales strongly recommends you seek professional advice from a qualified surveyor, solicitor or licensed conveyancer before agreeing or signing a business tenancy agreement. The Code is available through professional institutions and trade associations or through the website: <https://www.rics.org/uk/upholding-professional-standards/sector-standards/real-estate-for-leasing-business-premises-1st-edition/>. LCP's privacy notices that apply to its use of your personal information are at www.lcpgroup.co.uk/policies. The privacy notice that applies to you will depend on the nature of your relationship with LCP, and in some cases more than one may apply to you. LCP's privacy policy giving a high level overview of how LCP approaches data protection and your personal information can be found at www.lcpproperties.co.uk/uploads/files/LCP-Privacy-Web-and-Data-Policy-May-2018.pdf.