



READY TO LET

Available as 2 separate units

M

UNIT 1 AND 2

Ellendune Shopping Centre,
Wroughton, Wiltshire,
SN4 9LN

Local Occupiers Include



ELLENDUNE LOCAL

UNIT 1 AND 2

DESCRIPTION

Purpose built shopping scheme in village with 40, 2 hours free accessible car parking spaces, and located close to the public library and medical centre. Available as 2 separate units.

UNIT SIZE

Unit 1: 673 sq.ft (62.5 sq.m).

Unit 2: 681 sq.ft (63.3 sq.m).

RENT

£20,000 + VAT per unit per annum.

BUSINESS RATES

Rateable Value: £10,500 per unit.

SERVICES

All mains services are available.

SERVICE CHARGE & INSURANCE

Service Charge: £1,600 per annum + VAT per unit.

Insurance: £350 per annum + VAT per unit.

ENERGY PERFORMANCE

EPC rating E. Further information available upon request.

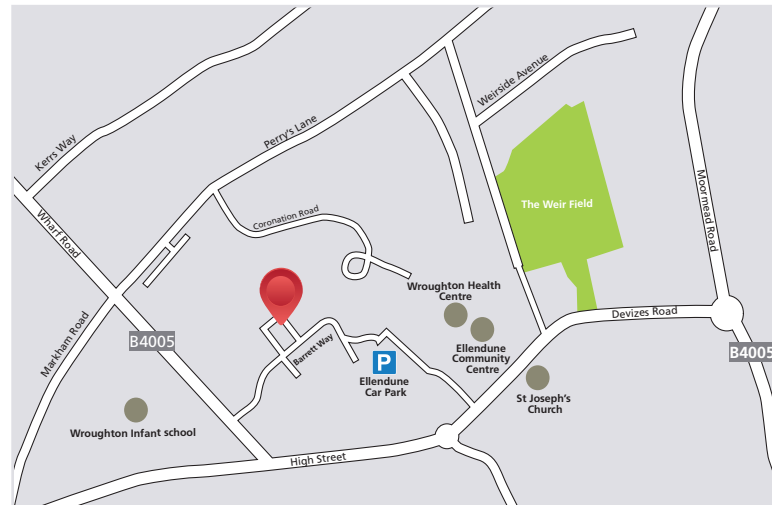
PLANNING

Class E use is established. It is the incoming tenant's responsibility to verify that their intended use is acceptable to the Local Planning Authority.

LEGAL COSTS

Each party is responsible for their own legal costs in connection with the granting of a lease.

LOCATION



8

Retail Units On-Site



40

Free Parking Spaces

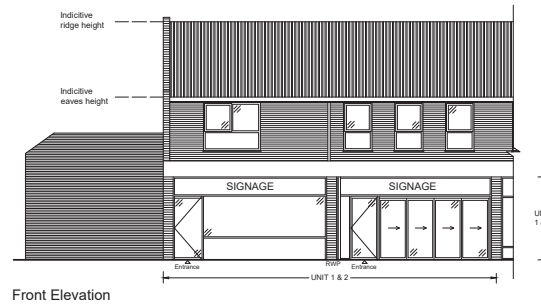


7,749 sq.ft

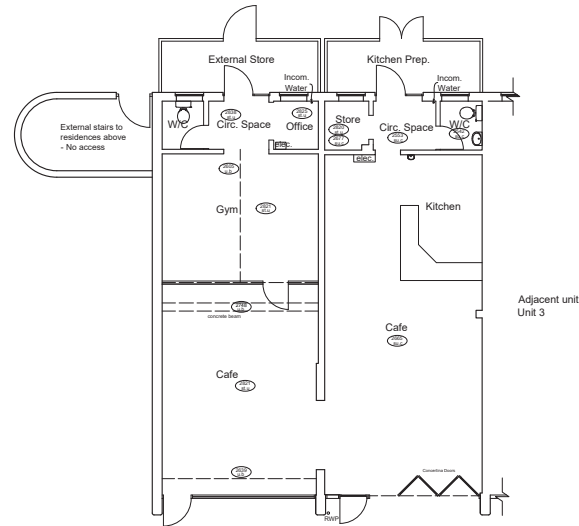
Total Area



What Three Words
inner.fish.dame



Front Elevation



Ground Floor Plan - 140.5m² (1512.3ft²)

LCP.

part of M^{Core}



George Watson

07423 662487
 GWatson@lcpproperties.co.uk

Viewing
 Strictly via prior appointment
 with the appointed agent

Carter Jonas

Cellan Richards

07890 659506
 0117 4039990
 Cellan.Richards@carterjonas.co.uk

MISREPRESENTATION ACT, 1967 London & Cambridge Properties Limited (Company Number 02895002) the registered office of which is at LCP House, Pensnett Estate, Kingswinford, West Midlands DY6 7NA its subsidiaries (as defined in section 156 of the Companies Act 2006) associated companies and employees ("we") give notice that: Whilst these particulars are believed to be correct no guarantee or warranty is given, or implied therein, nor do they form any part of a contract. We do our best to ensure all information in this brochure is accurate. If you find any inaccurate information, please let us know and where appropriate, we will correct it. We make no representation that information is accurate and up to date or complete. We accept no liability for any loss or damage caused by inaccurate information. This brochure gives a large amount of statistical information and there will inevitably be errors in it. Intending purchasers or tenants should not rely on the particulars in this brochure as statements or representations of fact but should satisfy themselves by inspection or otherwise as to the correctness of each of them. We provide this brochure free of charge and on the basis of no liability for the information given. In no event shall we be liable to you for any direct or indirect or consequential loss, loss of profit, revenue or goodwill arising from your use of the information contained herein. All terms implied by law are excluded to the fullest extent permitted by law. No person in our employment has any authority to make or give any representation or warranty whatsoever in relation to the property. SUBJECT TO CONTRACT. We recommend that legal advice is taken on all documentation before entering into a contract. You should be aware that the Code of Practice on Commercial Leases in England and Wales strongly recommends you seek professional advice from a qualified surveyor, solicitor or licensed conveyancer before agreeing or signing a business tenancy agreement. The Code is available through professional institutions and trade associations or through the website: https://www.rics.org.uk/upholding-professional-standards/sector-standards/real-estate/code-for-leasing-business-premises-1st-edition/. LCP's privacy notices that apply to its use of your personal information are at www.lcpgroup.co.uk/policies. The privacy notice that applies to you will depend on the nature of your relationship with LCP, and in some cases more than one may apply to you. LCP's privacy policy giving a high level overview of how LCP approaches data protection and your personal information can be found at www.lcpproperties.co.uk/uploads/files/LCP-Privacy-Web-and-Data-Policy-May-2018.pdf.